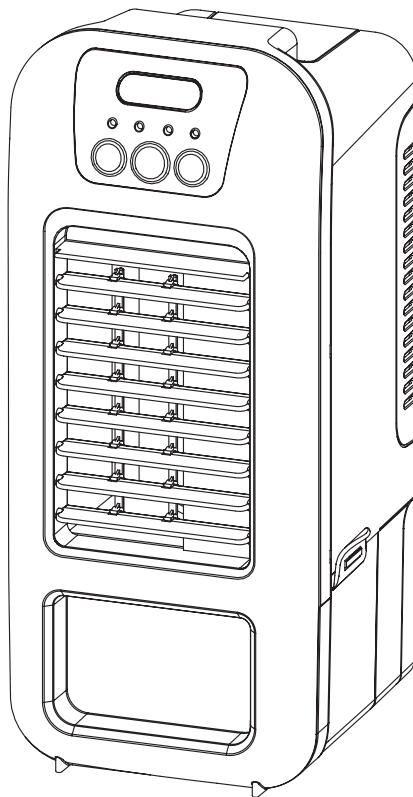


COMPANION

RECHARGEABLE MINI EVAPORATIVE COOLER

Instruction Manual

Part No. COMP378



CE

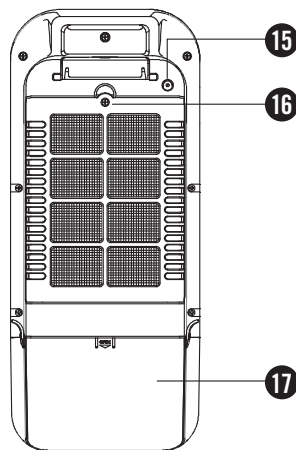
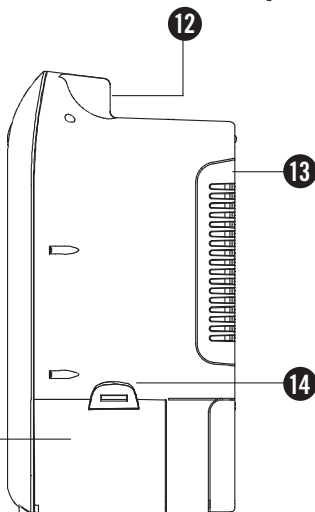
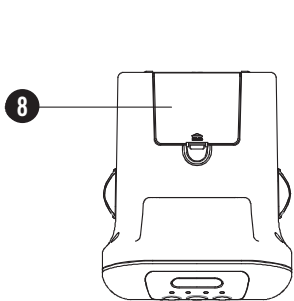
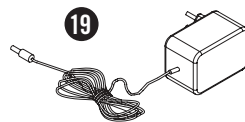
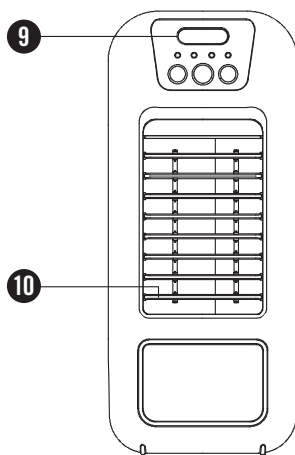
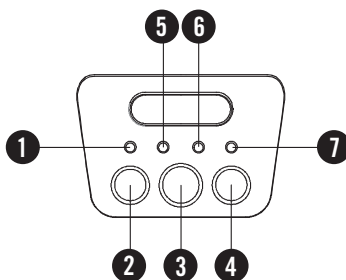
IMPORTANT

Remove isolation tape in battery compartment before charging battery for the first time – this is located behind the battery inside the battery compartment

companionleisure.com.au

PARTS LIST

1. Charging indicator
2. Light On/Off switch
3. Fan speed selector
4. Cooler On/Off switch
5. Fan high speed indicator
6. Fan low speed indicator
7. Cooler operation indicator
8. Water tank hatch
9. Light
10. Fan grill
11. Water tank
12. Carry handle
13. Dust cover and filter cartridge
14. Water tank lock
15. DC jack
16. Dust cover release screw
17. Battery door
18. DC adaptor
19. AC adaptor

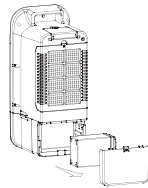


IMPORTANT

- Please read this instruction manual carefully before operating the unit
- **Remove isolation tape in battery compartment before charging battery for the first time – this is located behind the battery inside the battery compartment**
- Charge battery for minimum of 12 hours before first use or if unit has not been used for a long period of time
- If unit is being stored away for a long period of time without use, remove battery from unit
- Battery should be charged every 3 months
- Transport the unit in the upright position only. Do not lay the unit down, as water from the cooler system will leak and potentially damage the unit

WARNING

- DO NOT use non rechargeable batteries
- Place unit in well ventilated area when in use or recharging battery
- Disconnect unit from power supply before removing the battery
- To replace or place battery in unit, open battery compartment door
- When placing battery in unit, ensure it is installed as indicated inside battery compartment
- Do not dispose of battery in fire
- To be repaired by qualified persons only
- DO NOT expose to rain
- If adaptor cord becomes damaged, it must be replaced by a qualified person
- This unit is not intended for use by persons (including children) with reduced physical, sensory or mental capabilities or lack of experience and knowledge
- Children must be supervised at all times when around this unit



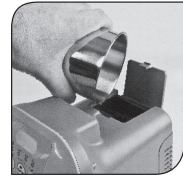
TO RECHARGE BATTERY

- Ensure unit is switched off prior to charging, installing or replacing battery
- Connect AC or DC adaptor (included) to unit
- Red light will be illuminated on unit to indicate battery is charging and remains on until charger is disconnected
- Unit can run from AC/DC input if the battery is flat, however battery will not recharge



EVAPORATIVE COOLER OPERATION

- Ensure the unit is placed on a level surface
- To fill tank, open top compartment and ensure water is placed in tank (800ml maximum capacity)
- Select fan speed (high or low) until green light is illuminated
- Press Cooler On/Off switch to turn cooler on or off; flashing blue light will indicate operation



FAN OPERATION

- To select fan speed, press Fan speed selector button until green light is illuminated under desired speed (high or low)



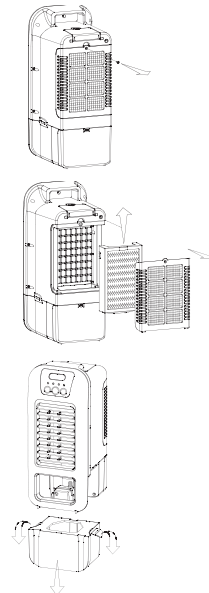
LIGHT OPERATION

- To turn light On or Off, press Light On/Off switch



CLEANING INSTRUCTIONS

- Ensure dust cover, filter cartridge and water tank are cleaned regularly
- To clean dust cover, unscrew plastic casing on back of unit to remove dust cover and filter cartridge. To clean and empty water tank, unclip tank from unit and remove water tank
- Clean components using a damp cloth only. Do not use strong cleaners or an excessive amount of water.
- Empty water tank prior to storing the unit away.
- Rinse water tank thoroughly and dry before replacing tank in unit.







TECHNICAL SPECIFICATIONS

Input voltage:	12V DC
Operating temperature:	0°C - 40°C
Humidity:	Lower than 90%
Battery charging time:	Minimum 12 hours
Battery type:	Rechargeable lead acid battery 6V
Brushless drive motor:	6V DC
Maximum fan air volume:	>60m ³ per hour
Maximum fan speed:	4.5m/s (approx)
Maximum water tank capacity:	800ml
Water consumption:	50ml/hour (approx)

APPROXIMATE BATTERY RUN TIME



Fan on high speed with cooler running:	4 hours
Fan on low speed with cooler running:	6 hours



For more information contact
Customer Service on 1300 555 197

Distributed by
PRIMUS AUSTRALIA Pty Ltd
Bundoora Victoria 3083
www.primusaustralia.com.au

COM4659