



OWNERS MANUAL



Blockout / Deluxe Shade Dome 4.2

10000540 / 10000541

www.oztrail.com

PRODUCTS & PARTS

Thank you for purchasing this quality OZtrail® product. Please keep this Owner's Manual in a safe and dry place, it contains important and helpful information.

- OZtrail® Shade Dome products are designed as a portable and temporary structure, they are not designed to be a permanent structure. OZtrail® Shade Dome's are no designed to cover cars or boats.
- Do not leave the Shade Dome unattended in heavy rain. In rain make sure water does not pond on the Canopy. The weight of the water could cause breakage and collapse.
- Always secure your Shade Dome firmly to the ground ensuring all peg points and guy ropes are utilised and remain firm. In heavy rain or winds remove canopy to avoid damaging the Shade Dome.
- Do not fold up the Shade Dome with the canopy or accessories still attached.

PLEASE NOTE

Due to our continual product development, specifications, parts and features of your purchase may vary from details within this Owner's Manual.

The following parts are included for product code 10000540 / 10000541

PART DESCRIPTION

- ✓ 1x Canopy
- ✓ 1x Sunwall
- ✓ 4x Side Pole
- ✓ 2x Centre Roof Pole Small
- ✓ 1x Centre Roof Pole Long
- ✓ 4x Feet
- ✓ 1x Webbing footprint
- ✓ 1x Carry bag
- ✓ 15x Pegs

WARRANTY

OZtrail® warrants this product against defect for a period of one year from the date of purchase.

OZtrail® will repair or replace the product, at discretion, should a warrantable defect arise within the warranty period. If the exact same model is unavailable a model of equivalent nature will be substituted at discretion.

This warranty excludes faults or failures caused by improper use and/or abuse; fair wear and tear; or failure to follow instructions regarding care and maintenance.

Products used for a commercial nature are not covered by this warranty against defects.

A warranty may be claimed by returning the product to its place of purchase, with a detailed proof of purchase clearly showing dates and detail.

You may also contact OZtrail®
by phone: +61 7 3193 1110
by writing: PO Box 111, Eagle Farm, QLD 4009
by email: warranty@oztrail.com.au

The benefits under OZtrail®'s warranty against defects are in addition to other rights and remedies under law in relation to goods.

Our goods come with guarantees that cannot be excluded under the Australian Consumer Law. You are entitled to a replacement or refund for a major failure and for compensation for any other reasonably foreseeable loss or damage. You are also entitled to have the goods repaired or replaced if the goods fail to be of acceptable quality and the failure does not amount to major failure.

For more detailed information and an explanation of these terms see www.oztrail.com.au/warranty

PLEASE NOTE

Accessories shown may be for display purpose only and not included with the purchase. Due to our policy of continual product development, specifications and features of this product may vary from what is stated within this Owners Manual.

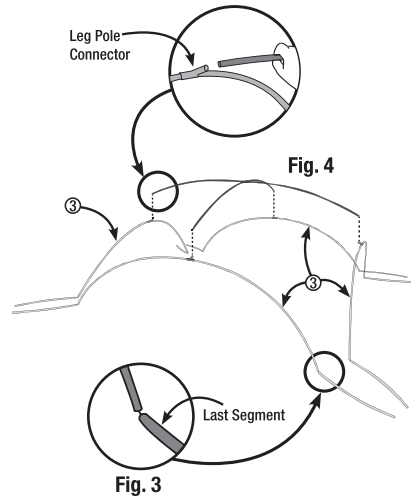
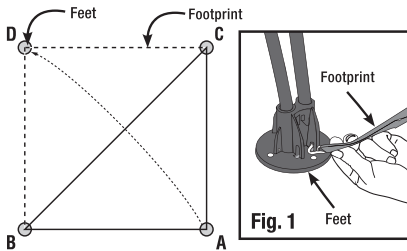
INSURANCE, YOUR PROTECTION AGAINST THE UNEXPECTED

Most people have problems from unexpected sources. Extreme weather is a good example of an unexpected source. Make sure that you place your expensive camping products on your Home and Contents Insurance policy. Most insurers will cover storm damage to your tent or any other products that fall outside of warranty.

ASSEMBLY INSTRUCTIONS

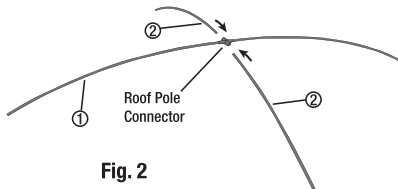
STEP 1: MARKING OUT POSITION

1. Get the feet and the webbing footprint and layout the size of the shade dome.
2. Attach the hooks on the webbing footprint to the feet to hold it in place (**Figure 1**).



STEP 2: SETTING UP THE SHADE DOME

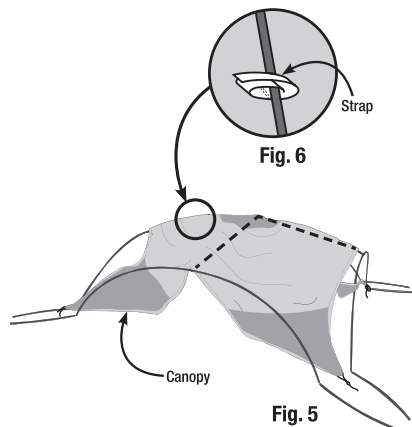
1. Assemble (1) Centre Roof Pole Long
2. Assemble both (2) Centre Roof Pole Small, Insert the ends of (2) small roof poles marked with the arrows into (1) long roof pole (**Figure 2**).



3. Partially assemble the four (3) side poles – Note – Do not assemble the last segment of the end of each pole (**Figure 3**).
4. Insert ends of the Long and small roof poles into the side poles (**Figure 4**). Note: Make sure the metal pin locks into the slot on top of the side pole. You might need to twist it until it clicks into place

STEP 3: ATTACHING THE CANOPY

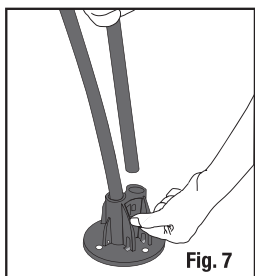
1. Unfold the canopy and pull over the frame. Fold back one of the corners of the canopy to allow easy access to inside of the shade dome.
2. Attach the canopy to the frame by using the straps located on the canopy



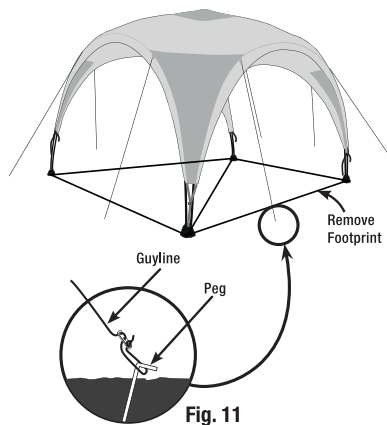
ASSEMBLY INSTRUCTIONS

STEP 4: FINISH ASSEMBLING THE SHADE DOME

1. Assemble the last segments from each end of the side poles
2. Insert the end of the poles into the feet and twist until the metal pin locks in
Note: Feet must be facing the centre of the shade dome with the vertical slots facing outward (**Figure 7**).

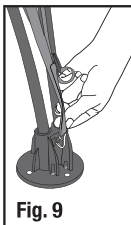
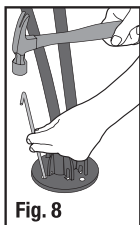


4. Attach the pegs to each guy rope and insert them into the ground (**Figure 11**).
5. Remove the webbing footprint after you have finished setting up the shade dome, as it will be a tripping hazard (**Figure 11**).



STEP 5: PEGGING OUT SHADE DOME

1. Secure the shade dome by pegging the feet into place (**Figure 8**).
2. Attached the hooks from the canopy onto the feet (**Figure 9**).
3. Wrap the straps on the canopy around the frame and insert into the buckle, pull tight (**Figure 10**).



CORRECT FITTING PROCEDURE & CONDITIONING YOUR CANOPY

Once you have purchased your Shade Dome, it is important to learn how to condition the canopy and to fit the canopy correctly to minimise the risk of water collecting on the canopy. Simply pitch your Shade Dome and wet the canopy down with your garden hose until the fabric and all seams are saturated. Pay particular attention to the seams - the thread swells when wet and blocks the needle holes. The needle holes also shrink around the thread. The fabric also benefits from this because the fibre swells into the weave and the waterproof treatment settles within the fabric. Let the canopy dry completely before repeating this wetting and drying process until there is no leakage during hosing. Always pack your canopy away dry.

It is important to note during this process the flow of water off the canopy and the importance of fitting the canopy correctly and avoiding panels of the canopy without the tension. During rain, roof panels without tension will allow water to collect into ponds instead of running off. To avoid water collecting ensure the Shade Dome is level and the corners of the canopy are fitted without gathered fabric.

PROLONG THE LIFE OF YOUR SHADE DOME

- Do not leave the Shade Dome unattended in heavy rain. In rain make sure water does not pond on the Canopy. The weight of the water could cause breakage and collapse.
- Always secure your Shade Dome firmly to the ground ensuring all pegpoints and guy ropes are utilised and remain firm. In heavy rain or winds remove the canopy to avoid damaging the Shade Dome.
- Do not fold up the Shade Dome with the canopy or accessories still attached.
- Never store a damp or dirty Shade Dome, as mildew and corrosion can form. Always allow the Shade Dome to dry completely before packing and stowing. If mildew occurs, use a soft bristle brush or sponge with mild detergent to clean it off. After beach use or wet weather treat all zips, poles and pegs with silicon spray.
- Always carry a roll of heavy duty tape for simple repairs to small rips, cuts and ash burns. This not only blocks the hole, it will prevent further tearing.
- When removing pegs, do not use the webbing or corner of the wall as your handle. Either use another peg, a peg remover or the claw of a hammer hooked under the peg to remove them.

PLEASE NOTE

OZtrail® Shade Domes are designed for temporary use only. Although our fabrics are treated for UV resistance, continuous exposure to sun light will reduce the life of the fabric. Fading of colour is an early warning sign. OZtrail Shade Domes are not designed as permanent dwellings or structures.

MATERIALS

Frame: Steel with plastic componentry

Canopy: Polyester

CARE INSTRUCTIONS

Wipe down all surfaces with fresh water after use. To remove marks, use a soft brush or sponge with fresh water and mild detergent only and rinse with fresh clean water. Allow to dry thoroughly. After beach use or wet conditions treat all zips and metal components with silicon spray. Never pack away damp, dirty or wet.

IMPORTANT SAFETY & CARE INFORMATION

PLEASE READ THIS BEFORE SETTING UP YOUR PURCHASE

CAMP SAFE - SAFETY HABITS

Fabrics used in the construction of OZtrail® Shade Domes are treated for fire retardant properties. This treatment reduces the rate at which the fabric will burn.

THE FIRE RETARDANT FABRIC WILL STILL BURN IF IT COMES INTO DIRECT CONTACT WITH A FLAME OR EXTREME HEAT.

The application of any foreign substance to the fabric such as some waterproofing treatments or insect sprays may render the fire retardant treatment process ineffective.

The following pages cover several safety tips that will help you avoid some of the common hazards encountered when using a Shade Dome.

TO PREVENT INJURY CAUSED BY GAS POISONING OR SUFFOCATION WHEN USING A SHADE DOME WITH INNER TENT KITS OR WALL KITS

- Be aware gas, fumes or lack of oxygen within the Shade Dome could result in unconsciousness, brain damage and even death.
- Always ensure your Shade Dome is well ventilated. When using the optional solid wall kits or inner tent, do not close every window or wall. A well ventilated Shade Dome not only maintains healthy Oxygen levels but also reduces condensation build up inside the Shade Dome.
- Do not use fuel burning, oxygen consuming devices inside the Shade Dome. This includes candles, gas lanterns, kerosene lamps, stoves, cooking and heating appliances.
- Do not use gas appliances of any kind inside the Shade Dome.

TO PREVENT INJURY CAUSED BY FIRE

- Do not position the Shade Dome near a camp fire or any other flame source.
- Do not use candles, matches or other flames sources near the Shade Dome canopy.
- Only use recommended water repellent compounds on the Shade Dome canopy.
- Do not spray tent fabrics with insecticides.



TO PREVENT INJURY CAUSED BY ELECTRICITY

- Always exercise care when using electricity and electric lighting in and near Shade Domes. Only use 12V lighting.



IMPORTANT SAFETY & CARE INFORMATION

TO PREVENT INJURY CAUSED BY YOUR CAMPING ENVIRONMENT

- Do not position your Shade Dome on an area that could get flooded.
- Do not position your Shade Dome near cliffs in case of collapse or rock fall.



- Do not leave your Shade Dome erected in strong weather conditions.
- Do not position your Shade Dome under trees with dead branches or under trees known to drop branches.





Designed & Imported by:
Adventure Trading Australia Pty Ltd
71 Charles Ulm Place,
Eagle Farm, QLD 4009
AUSTRALIA

P: 1300 362 921

www.oztrail.com.au

facebook.com/OZtrailAustralia

