



TRUSTED SINCE 1941

ROAM RINSER



INSTRUCTION MANUAL

Model No. 10001966

IMPORTANT

- Please carefully read these instructions before using the appliance. Remember to keep these instructions handy for later use.



CAUTION: THIS APPLIANCE IS NOT INTENDED FOR THE SUPPLY OF DRINKING WATER, IT IS INTENDED FOR THE SUPPLY OF WATER FOR WASHING AND CLEANING PURPOSES ONLY.

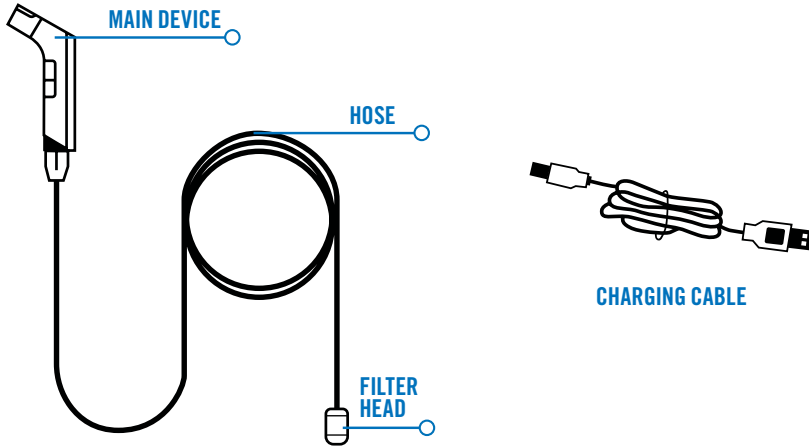
SAFETY INFORMATION

- This unit is intended to be used only as instructed with the contents of this manual.
- Do not run unit without hose in a water container / source longer than 1 - 2 seconds.
- Do not use the unit with seawater, dirty or muddy water from rivers / lakes.
- Ensure the charging port is tightly closed.
- Do not submerge the device in water.
- Children must be always supervised when around this unit.
- Recharge the battery as per the battery instructions found in manual.
- Charge only with the correct voltage as listed on the rating plate.
- Keep the device away from heat or fire.
- Do not expose the device to below 0-degree Celsius temperature, this can damage the battery, motor and hose.
- Do not use this unit to pump alcohol or other corrosive liquids such as oil.
- Do not alter or disassemble the device.
- Do not overcharge the device.
- Replace filter every 1 - 2 years, depending on frequency of use.
- Replace hose every 1 - 2 years, depending on frequency of use.

FAILURE TO FOLLOW THESE INSTRUCTIONS WILL VOID YOUR WARRANTY AND POTENTIALLY LEAD TO ACCIDENTAL DAMAGE TO PROPERTY OR INJURIES.

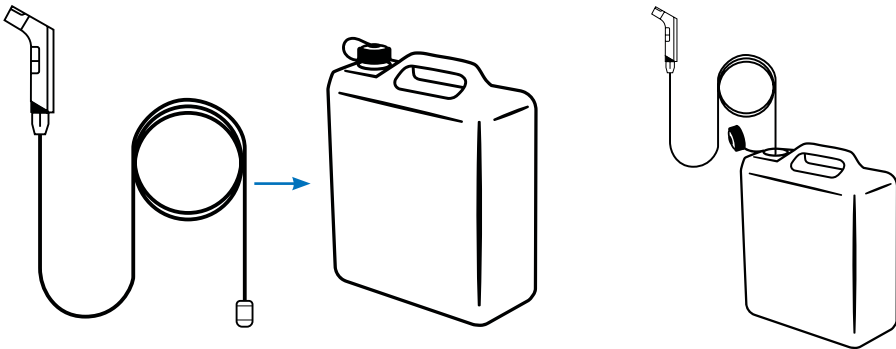
COMPANION® ARE NOT LIABLE FOR ANY DAMAGES, INJURIES OR WARRANTY CLAIMS IF THESE DIRECTIONS ARE NOT FOLLOWED.

UNDERSTANDING THE APPLIANCE

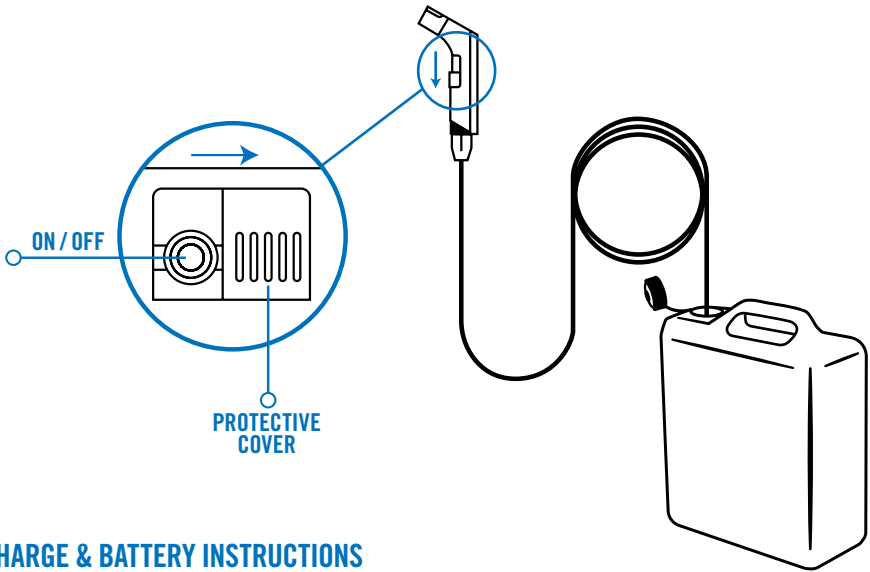


OPERATION

Step 1. Place the hose into a water container filled with clean water.



Step 2. Slide down the protective switch cover. Press the button once for low mode and twice for high mode. Press again to turn the unit off.



CHARGE & BATTERY INSTRUCTIONS

- Step 1.** Open the socket cover.
- Step 2.** Plug in the USB cable to charge the device when battery is low.
- Step 3.** Connect the USB charging cable to any USB port with 5V / 0.5-1A output.

LED INDICATOR GUIDE



4 LED	3 LED	2 LED	1 LED	ALL LEDs OFF
75% - 100% Capacity	50% - 75% Capacity	25% - 50% Capacity	7% - 25% Capacity	0% - 7% Capacity

NOTE: Charging while using a USB wall adaptor will be faster than a computer USB port.

- Charge the battery to full capacity after each use.
- Charge before first use.
- Recharge the battery at least every 3 months, even when not in use, to prevent full discharge.
- Only charge at room temperature. Keep away from heat, flames or flammable items.

STORAGE

- Ensure Roam Rinser and all parts are completely dry before storing away.
- Purge the unit by turning it on without the hose in water for 1 - 2 seconds, this will remove most water inside the unit.
- Dry all hoses thoroughly before storing, we recommend to hang out for 1 - 2 days after use to ensure its completely dry.
- Store the product fully charged as per the battery care instructions.
- Store in a dry, cool place away from direct sunlight.

MAINTENANCE

- Replace filter every 1-2 years, depending on the frequency of use.
- Replace hose every 1-2 years, depending on the frequency of use.
- For further information or assistance please contact customer service on 1300 362 921 or email: info@adventureoperations.com

SPECIFICATIONS

Part No.	10001966
Dimension	20L x 8W x 4H cm
Weight	280g
Runtime (Approx)	Low 1 HR High 30 MINS
Flow Rate Setting	Low 700ML High 1L
Hose Length	180cm
Battery	800mAh Lithium Rechargeable
Charge Time	3 HRs (Via USB-C)
Charging Method	USB output of 5V > 0.5A
Voltage	3.7V DC
Current	< 1.5A
Power	< 5.55W
Power Supply	Lithium Battery

WARRANTY POLICY

1. Products distributed by Adventure Operations Australia Pty Ltd and any of our subsidiaries come with guarantees that cannot be excluded under the Australian Consumer Law. You are entitled to a replacement or refund for a major failure and compensation for any other reasonably foreseeable loss or damage. You are also entitled to have the goods repaired or replaced if products fail to be of acceptable quality and the failure does not amount to a major failure.
2. In addition, we warrant that this product will be free from defects in materials and workmanship under normal use as described in the published product documentation for **1 year** from the date of original purchase (Limited Warranty). This Limited Warranty is only valid and enforceable in Australia and will apply only if you have purchased the product from us or our authorised resellers.
3. To the extent permitted by the Australian Consumer Law and any applicable local law:
 - (a) our obligations under this Limited Warranty are limited to the repair, replacement or refund of covered parts that prove defective under normal use during the Limited Warranty and does not extend to any claim for damages that you or any other person may have for any loss (including without limitation consequential damages or loss of profit, freight/shipping or travel costs), or damage howsoever caused whether or not such loss or damage arises as a result of any defect in the product or from the failure or omission on our part to comply with any obligation at law;
 - (b) in replacing a defective product under the Limited Warranty, we may, at its discretion, substitute a model of equivalent nature where the exact model is unavailable;
 - (c) this Limited Warranty does not apply to damage caused by failure and damage caused by improper use and abuse, fair wear and tear, accidents, misuse (including failure to follow instructions regarding care and maintenance of the product), neglect, disassembly, alterations or external causes such as, but not limited to, water damage, exposure to sharp objects, exposure to excessive force, anomalies in the electrical current supplied to the product (if applicable), and extreme thermal or environmental conditions;
 - (d) we may elect, at our discretion and as an alternative to repairing or replacing a defective part to refund the cost of the relevant product upon it being returned to us; and
 - (e) this Limited Warranty does not extend to any products acquired for the purposes of re-supply, or for use in a manufacturing, or repair processes.
4. This warranty may be claimed by:
returning the product to its place of purchase, with a detailed proof-of-purchase clearly showing the date and detail of the purchase;
5. If you have any questions concerning this warranty policy, you may contact us in writing:
Adventure Operations, 71 Charles Ulm Place, Eagle Farm, 4009 QLD, or by email:
warranty@adventureoperations.com or visit our website: www.adventureoperations.com

TO THE EXTENT PERMITTED BY LAW, ADVENTURE OPERATIONS AUSTRALIA PTY LTD, ITS SUBSIDIARIES AND ITS VENDORS DISCLAIM ANY IMPLIED WARRANTIES OF MERCHANTABILITY OR FITNESS FOR A PARTICULAR PURPOSE OR ANY SIMILAR STANDARD IMPOSED BY APPLICABLE LEGISLATION AND ADVENTURE OPERATIONS AUSTRALIA PTY LTD AND ITS SUBSIDIARIES' RESPONSIBILITY TO REPAIR, REPLACE, OR OFFER A REFUND FOR DEFECTIVE PRODUCTS IS THE SOLE AND EXCLUSIVE REMEDY PROVIDED TO ITS CUSTOMERS UNDER THIS DOCUMENT.

NOTE:

This image shows a single sheet of white paper with horizontal blue or grey ruling lines. The lines are evenly spaced and run across the width of the page. There are no margins, text, or other markings on the paper.

WARRANTY - For details see www.companionoutdoor.com/warranty

Companion® is a registered trademark of
Adventure Trading Australia Pty Ltd

Designed by:
Adventure Trading Australia Pty Ltd
71 Charles Ulm Place,
Eagle Farm, QLD 4009
AUSTRALIA



Made in China